

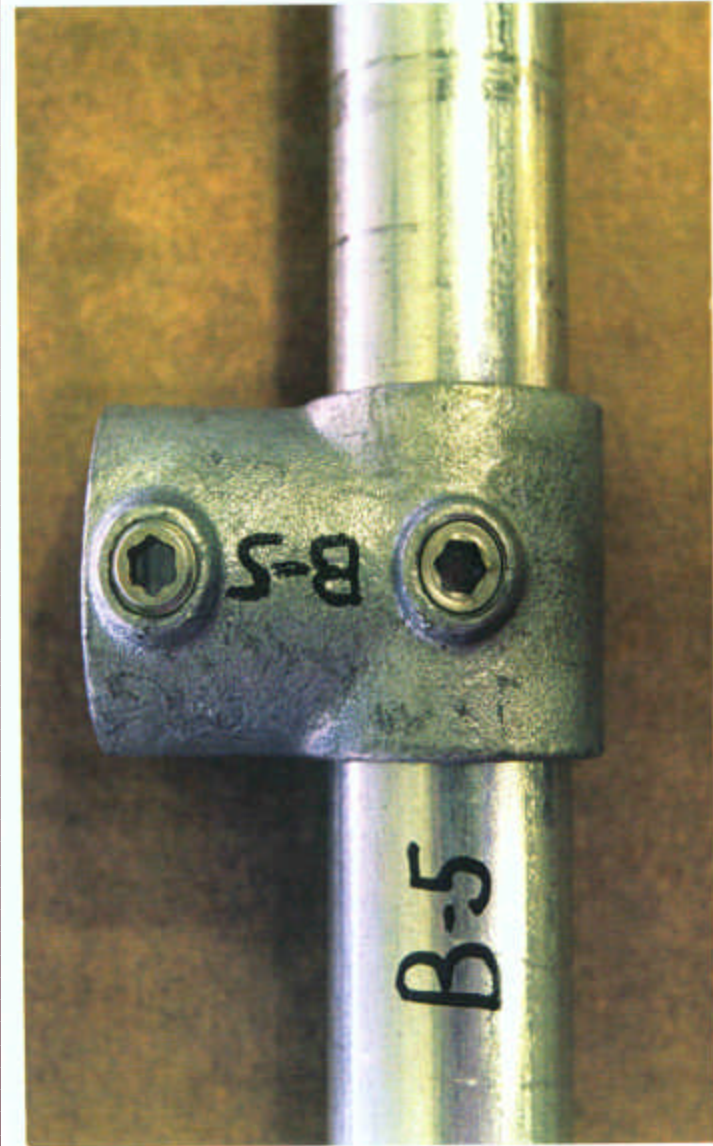
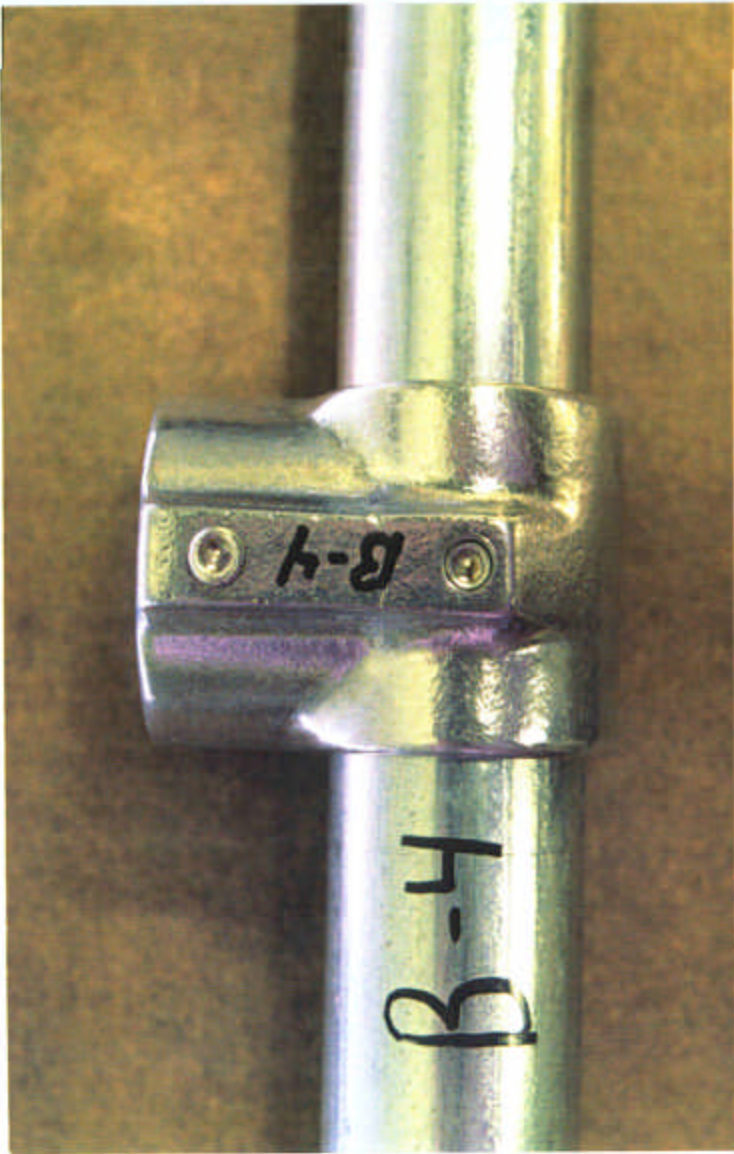


Salt Spray Fog Test

- Test performed by independent lab testing facility
- Test performed to ASTM B-117 standards
- Pictures were taken as received, 48 hrs, 240 hrs, 496 hrs, and at 1000 hrs

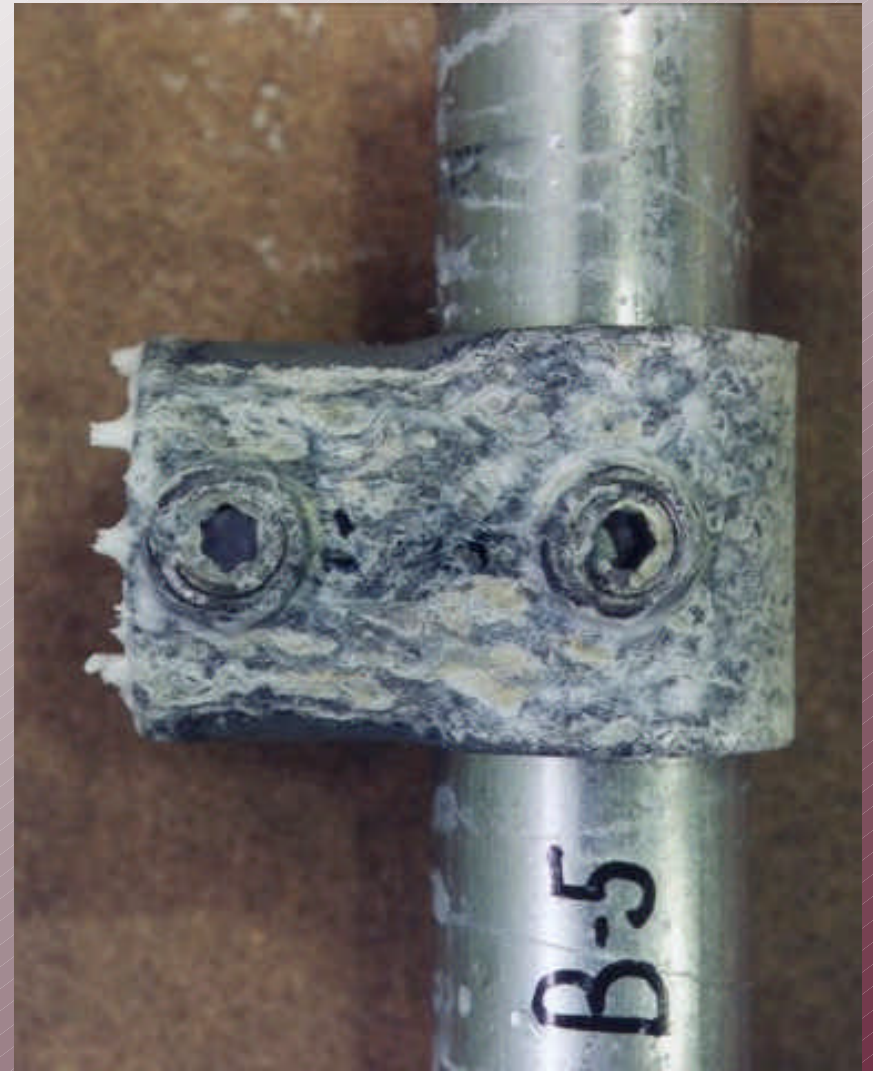
Fittings

- Fittings labeled B-4 are from Hollaender and made of Aluminum 535
- Fittings labeled B-5 are made of galvanized, malleable iron
- Both placed on galvanized steel pipe.

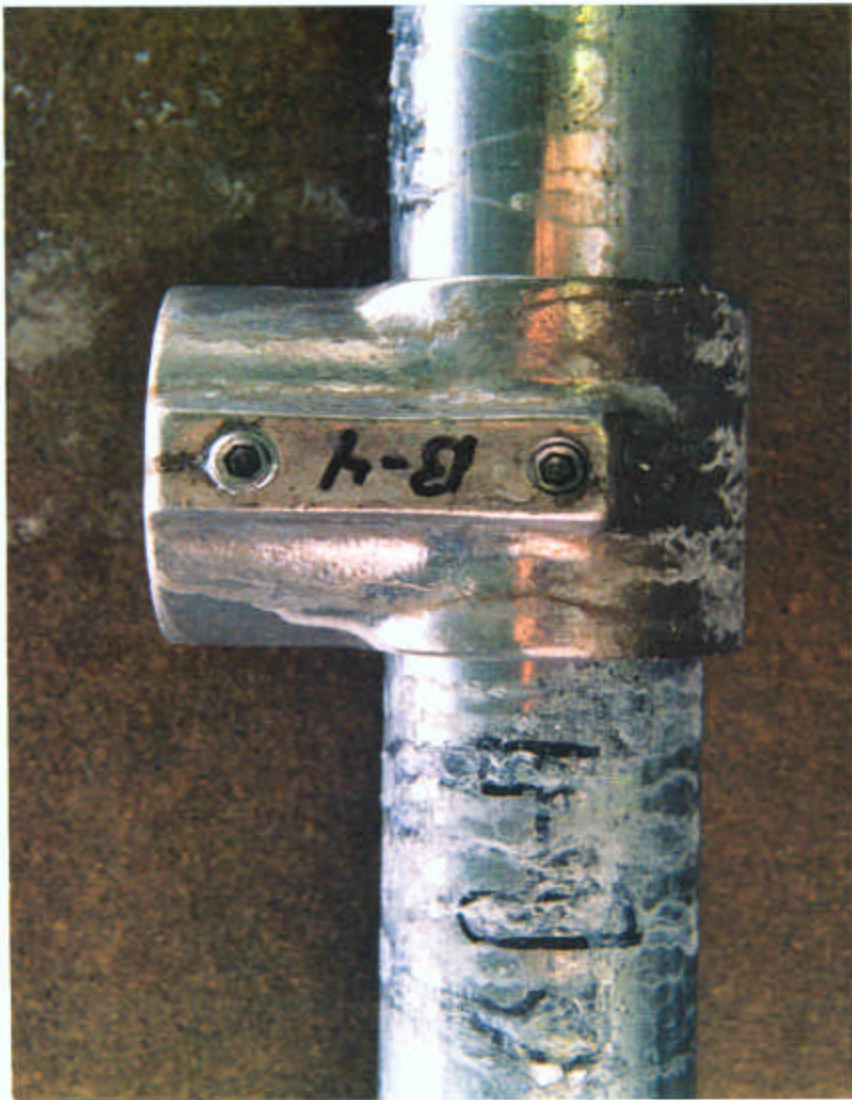


Fittings As Received

Academy Fence Company Inc, established in the 1960's.
Headquarters 119 North Day Street, Orange, NJ 07050.
Call Us: (973) 674-0600.

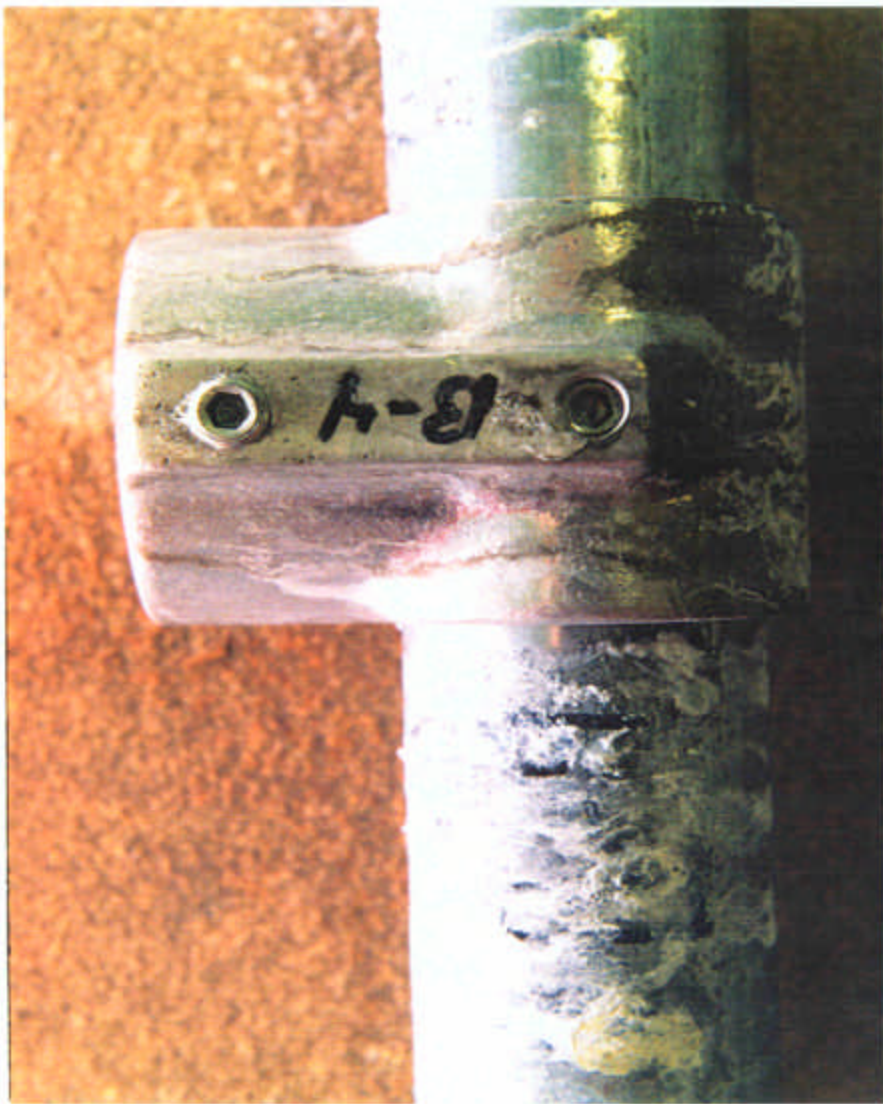


Fittings At 48Hrs



Fittings At 240Hrs

Academy Fence Company Inc, established in the 1960's.
Headquarters 119 North Day Street, Orange, NJ 07050.
Call Us: (973) 674-0600.



Fittings At 496Hrs

Academy Fence Company Inc, established in the 1960's.
Headquarters 119 North Day Street, Orange, NJ 07050.
Call Us: (973) 674-0600.



Fittings At 1000Hrs

Academy Fence Company Inc, established in the 1960's.
Headquarters 119 North Day Street, Orange, NJ 07050.
Call Us: (973) 674-0600.

Results

- The Hollaender fitting accrued no structural damage due to “galvanic reaction”
- Malleable iron fitting started to show red rust after 48 hrs
- After 1000 hrs the malleable iron fitting was unable to be loosened or moved
- After the same time the Hollaender fitting was able to be loosened, moved, and tightened back to the proper torque
- Copyright 2001 The Hollaender Manufacturing Company